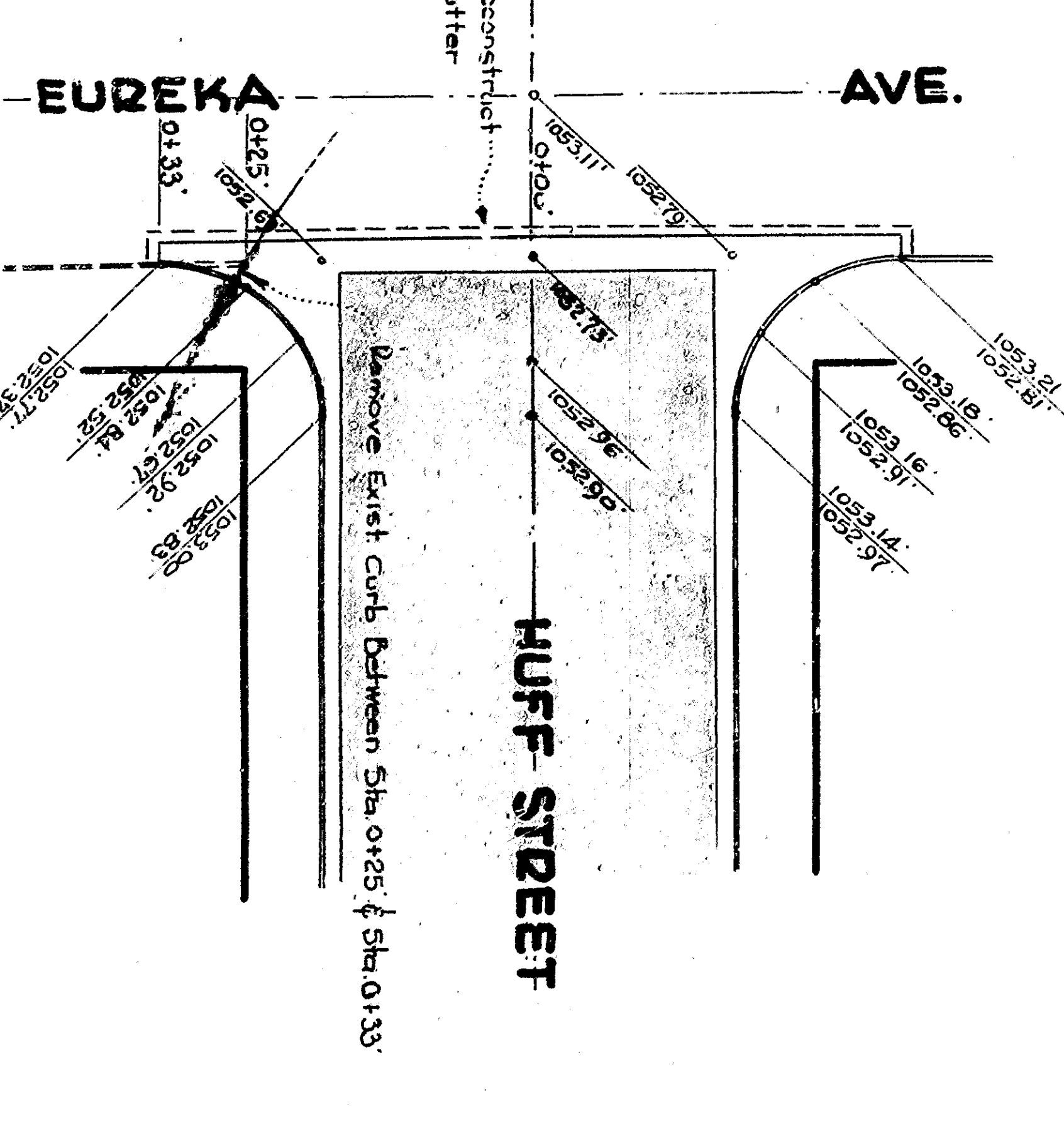
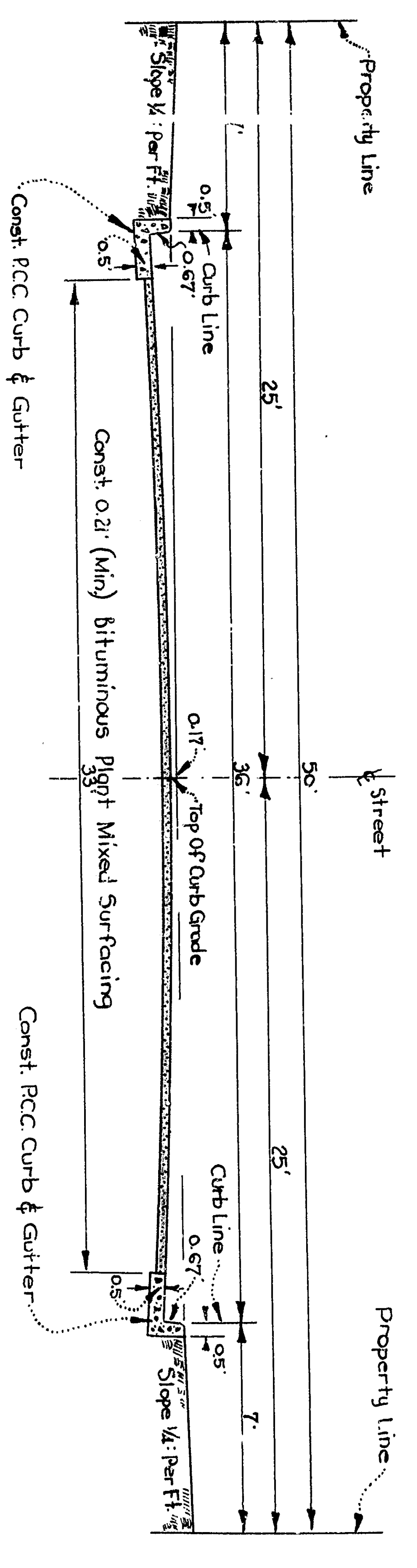


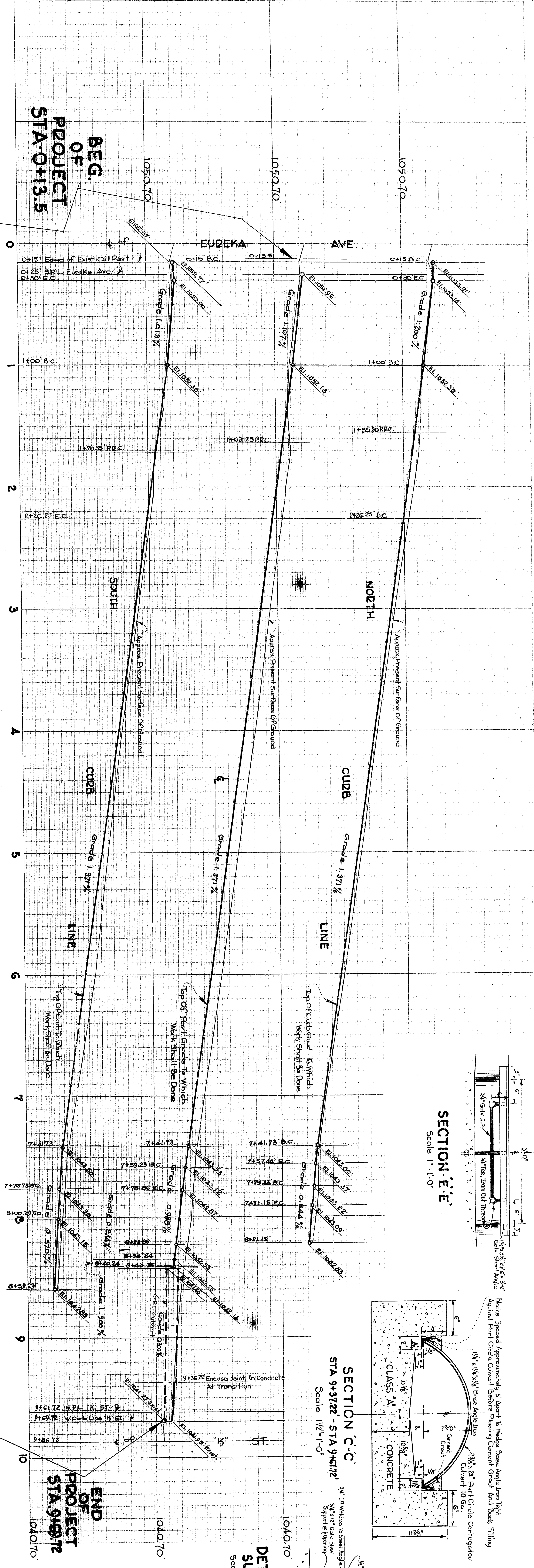
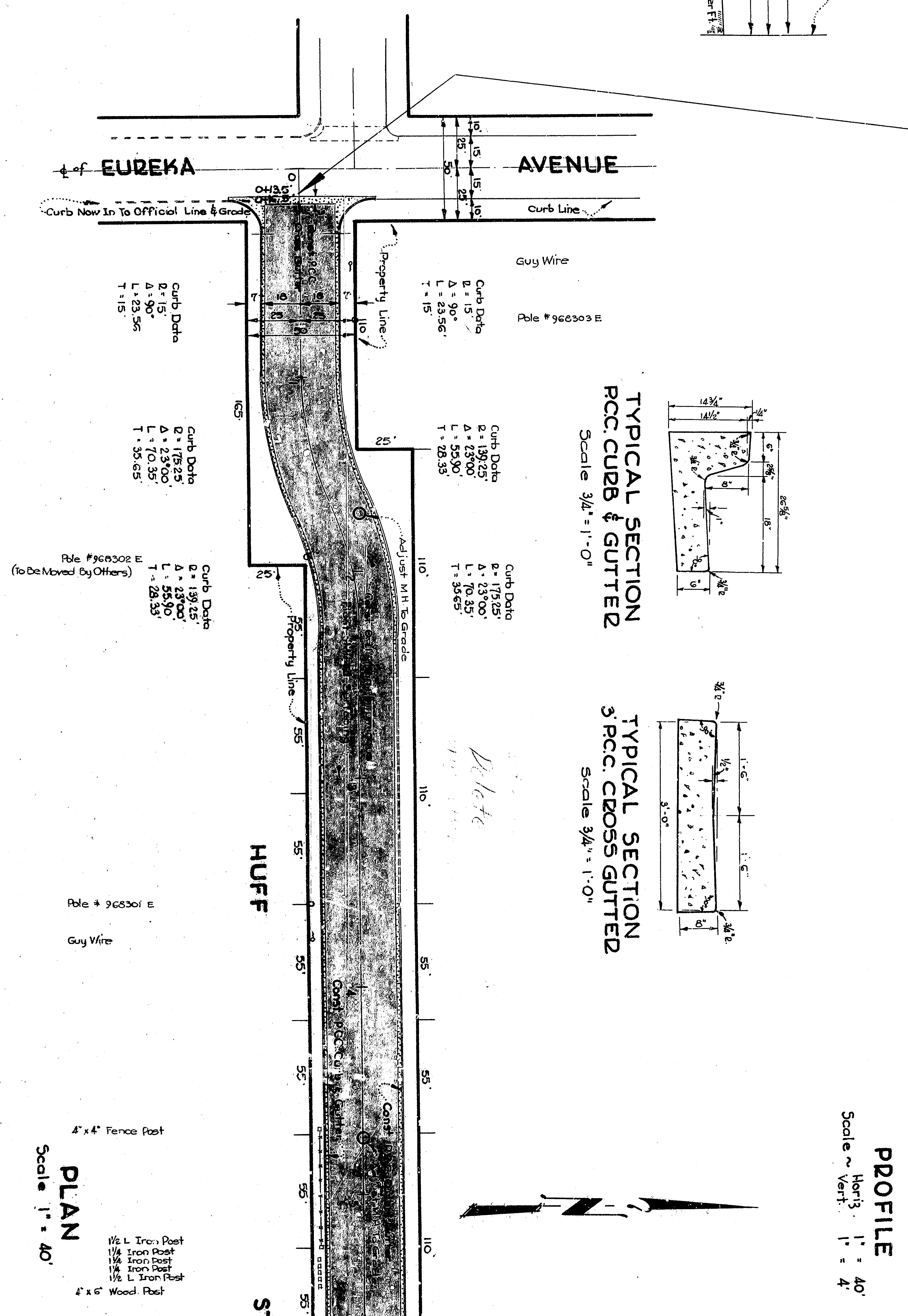
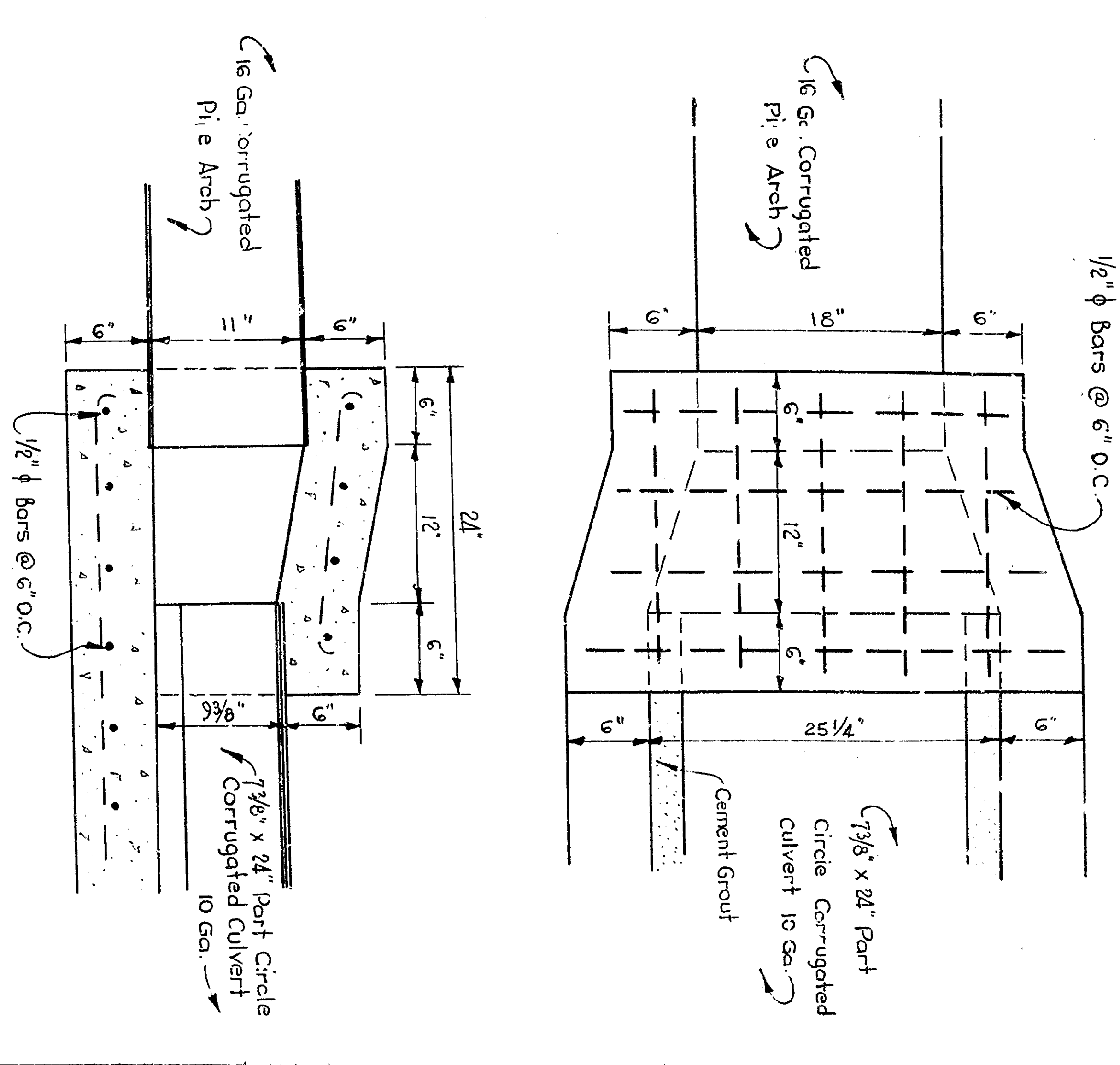
INTERSECTION LEVELS
Scale 1" = 20'



STA. 1+00 - STA 7+41.73
TYPICAL CROSS SECTION
Scale 1" = 5'

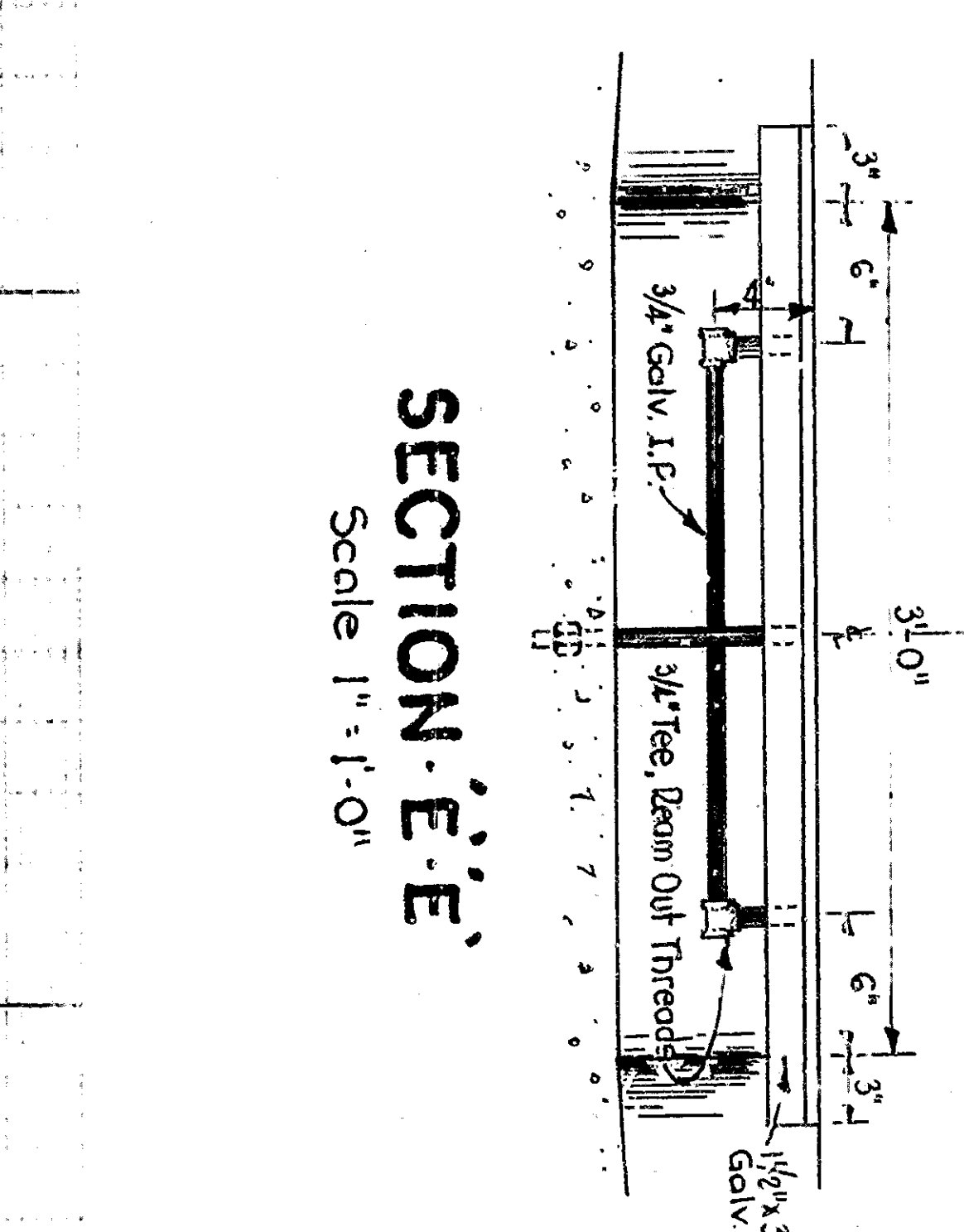


JUNCTION BOX - STA 9+36.72
SECTION
Scale 1" = 1'-0"

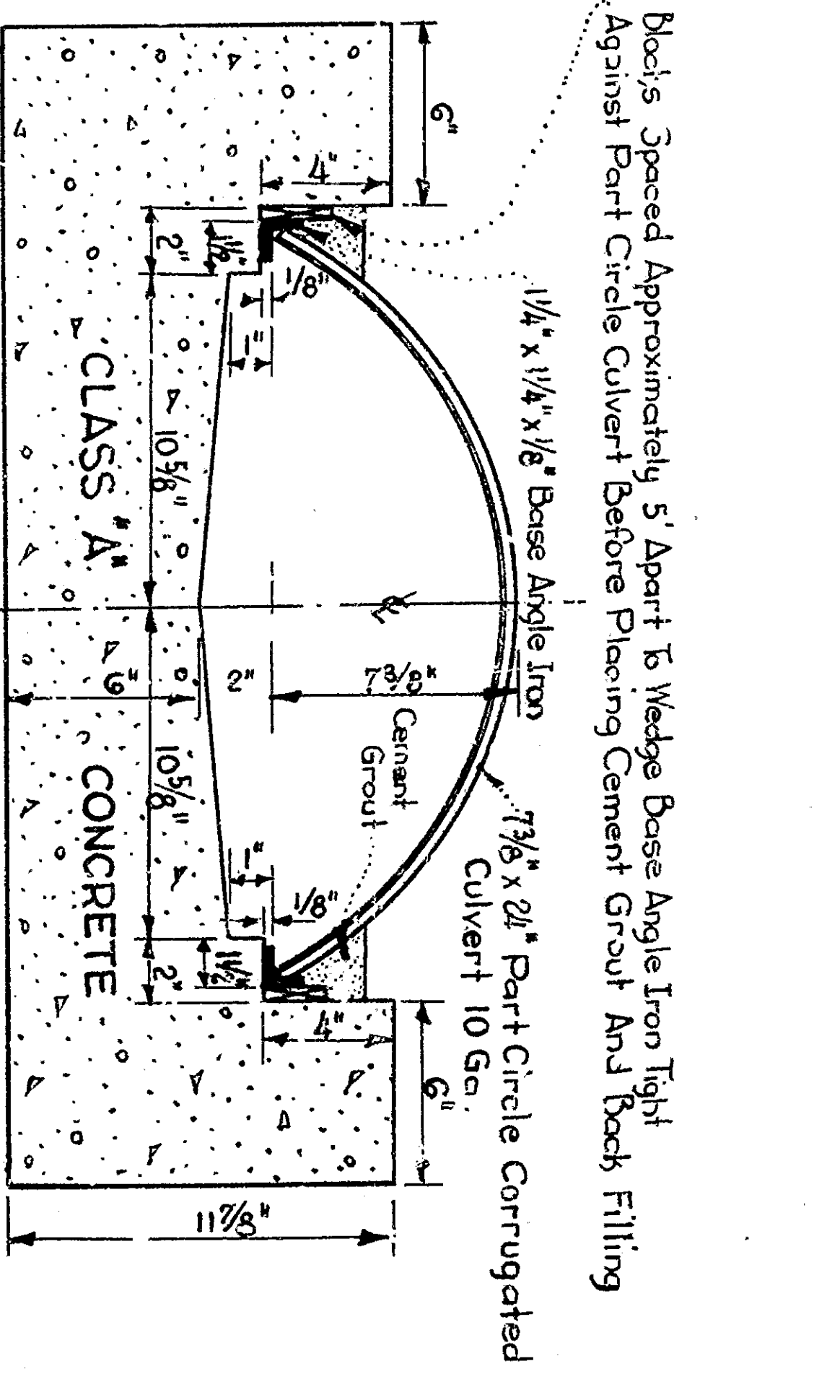


PROFILE
Scale 1" = 40'
Vert. 1" = 4'

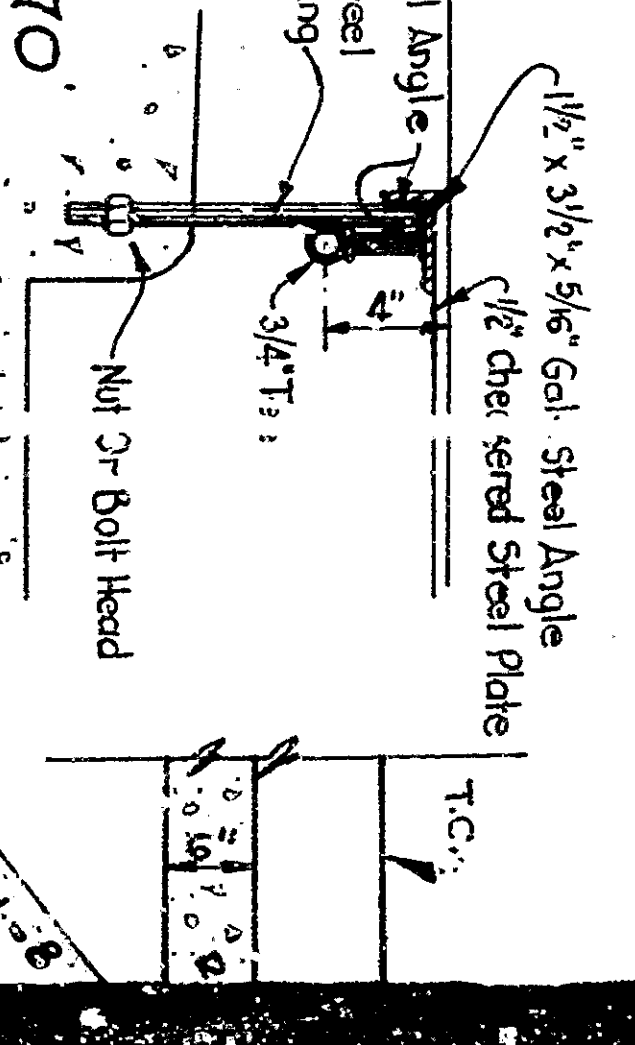
SECTION E-E
Scale 1" = 1'-0"



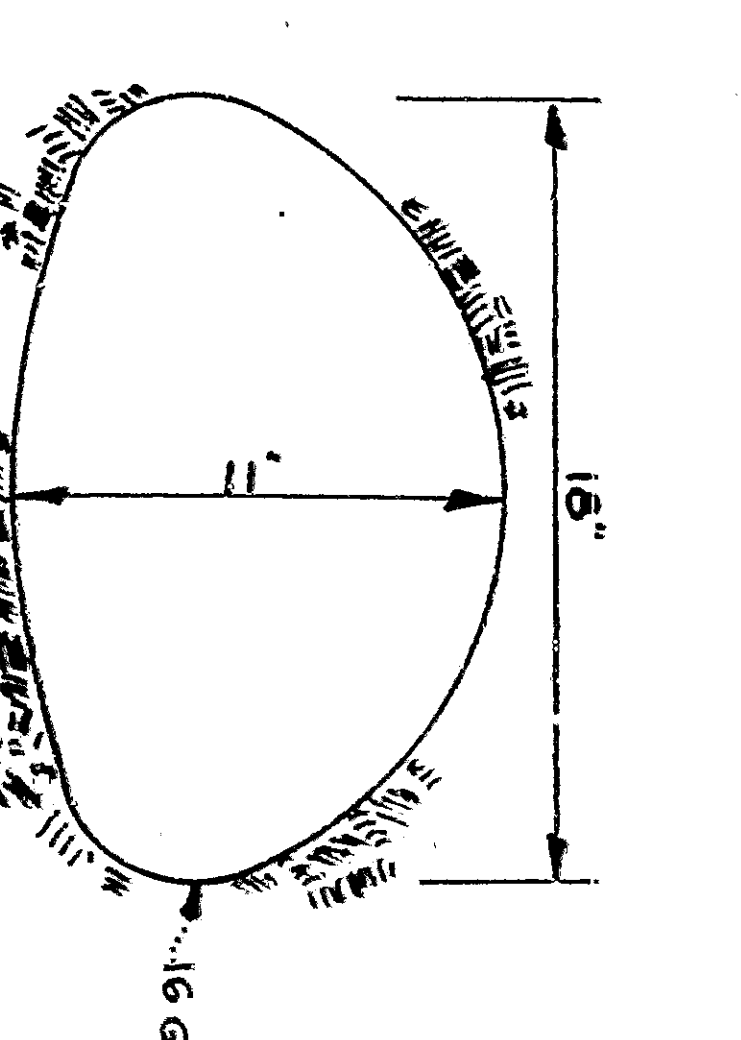
SECTION C-C
STA 9+37.22 - STA 9+41.72
Scale 1 1/2" = 1'-0"



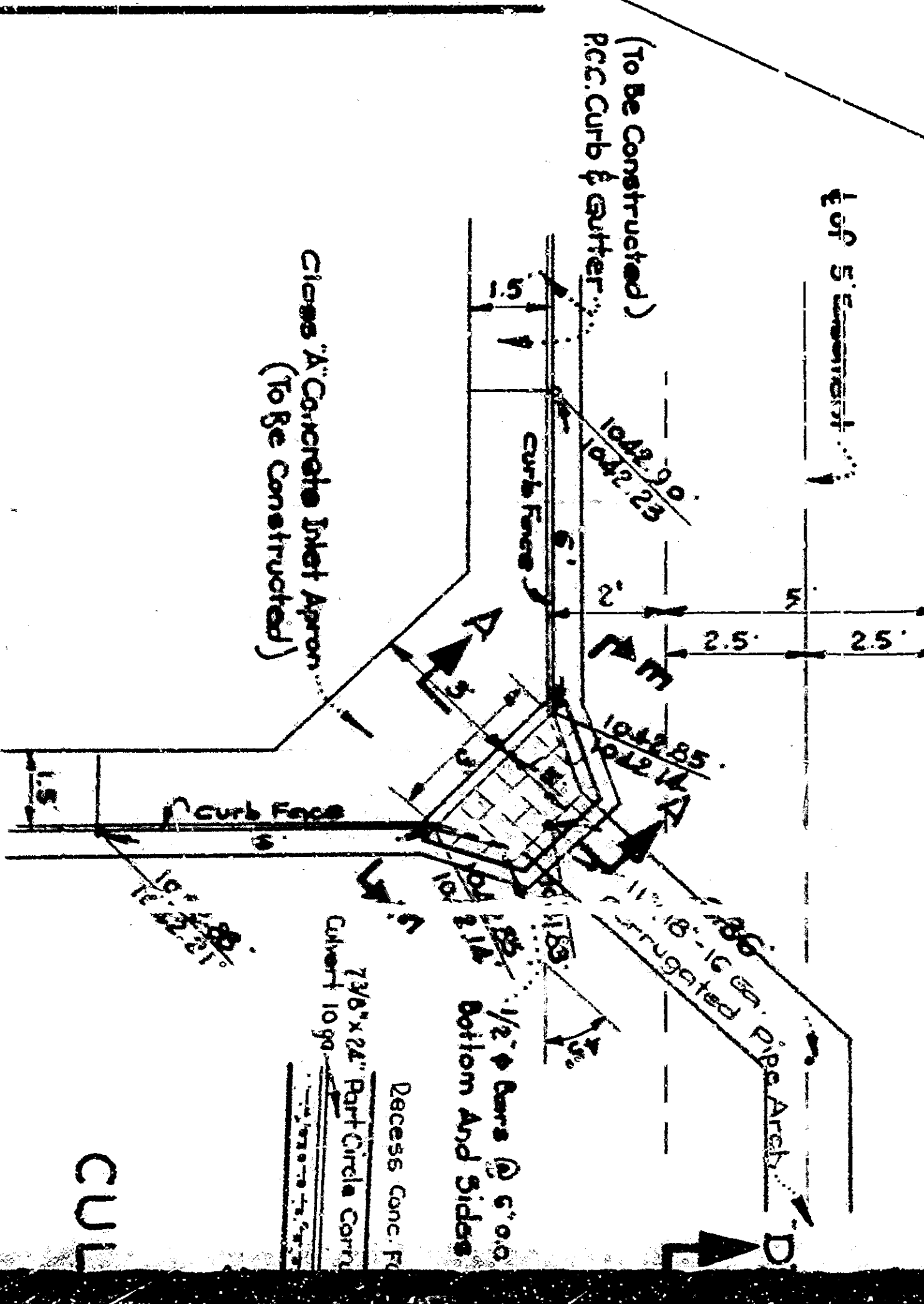
DETAIL OF SUPPORT
Scale 1" = 1'-0"



SECTION B-B
STA 8+42.36 - STA 9+36.72
Scale 1 1/2" = 1'-0"



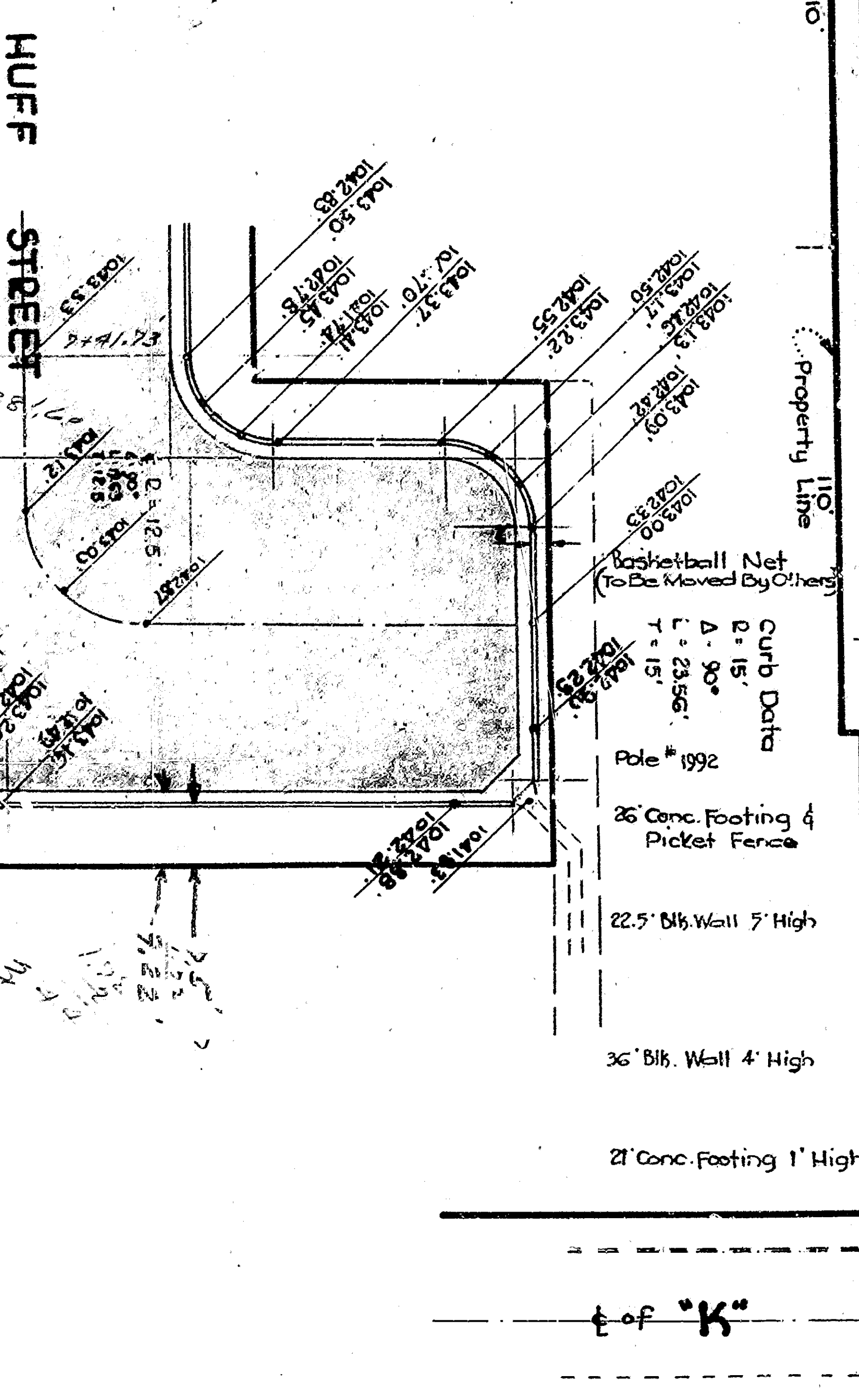
CULVERT INLET DETAIL
Scale 1/2" = 1'-0"



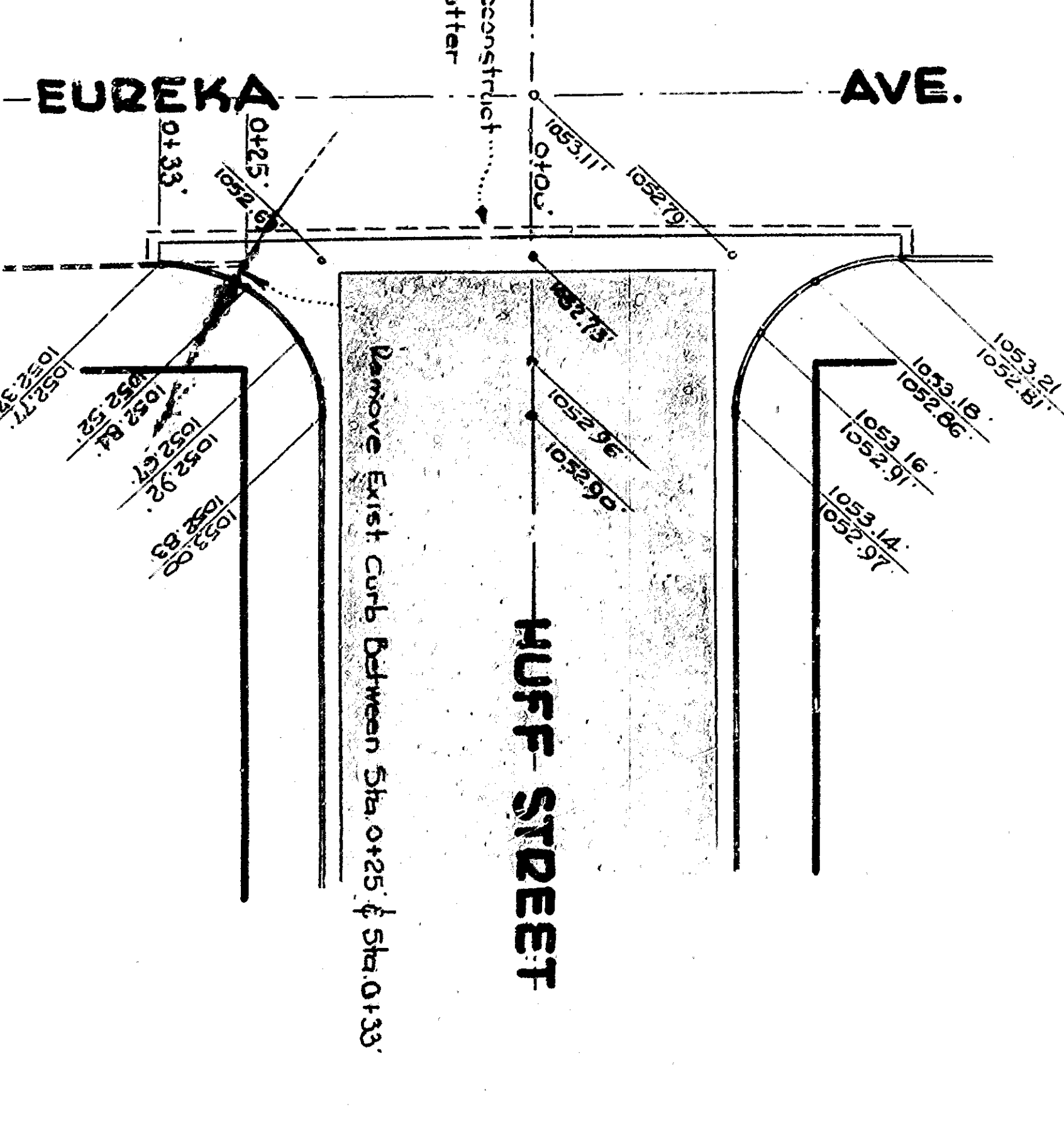
PLAN
DEPARTMENT OF PUBLIC WORKS
CITY OF EUREKA
CURBS

NOTE: All work shall conform to the provisions of the City of Eureka Ordinance No. 1000, and all other applicable provisions.
All materials to be used shall be of the best quality obtainable.
Particulars to be shown on drawings shall be as shown on drawings.

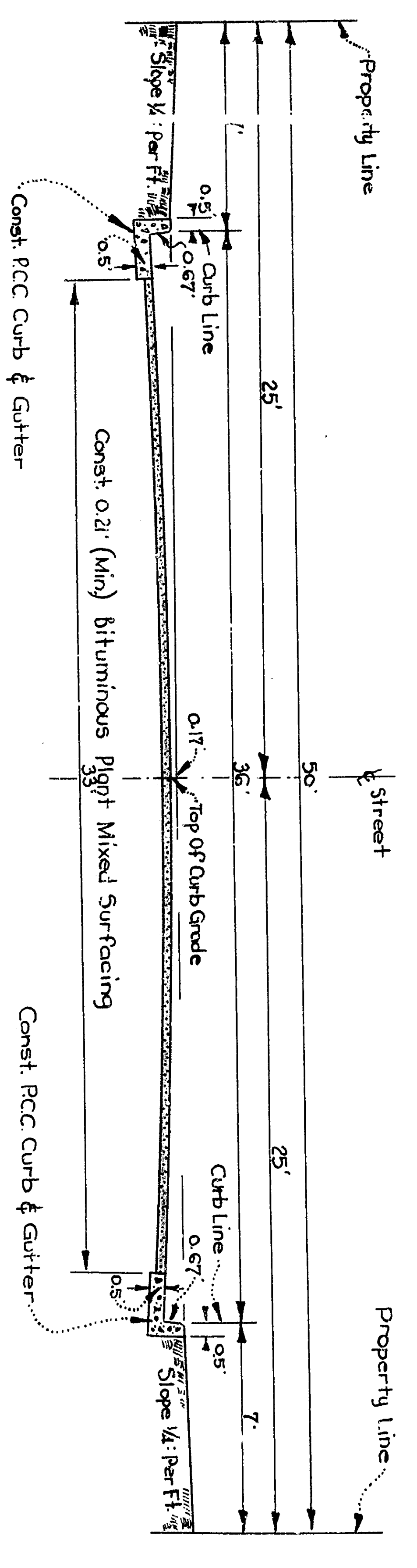
INTERSECTION LEVELS
Scale 1" = 20'



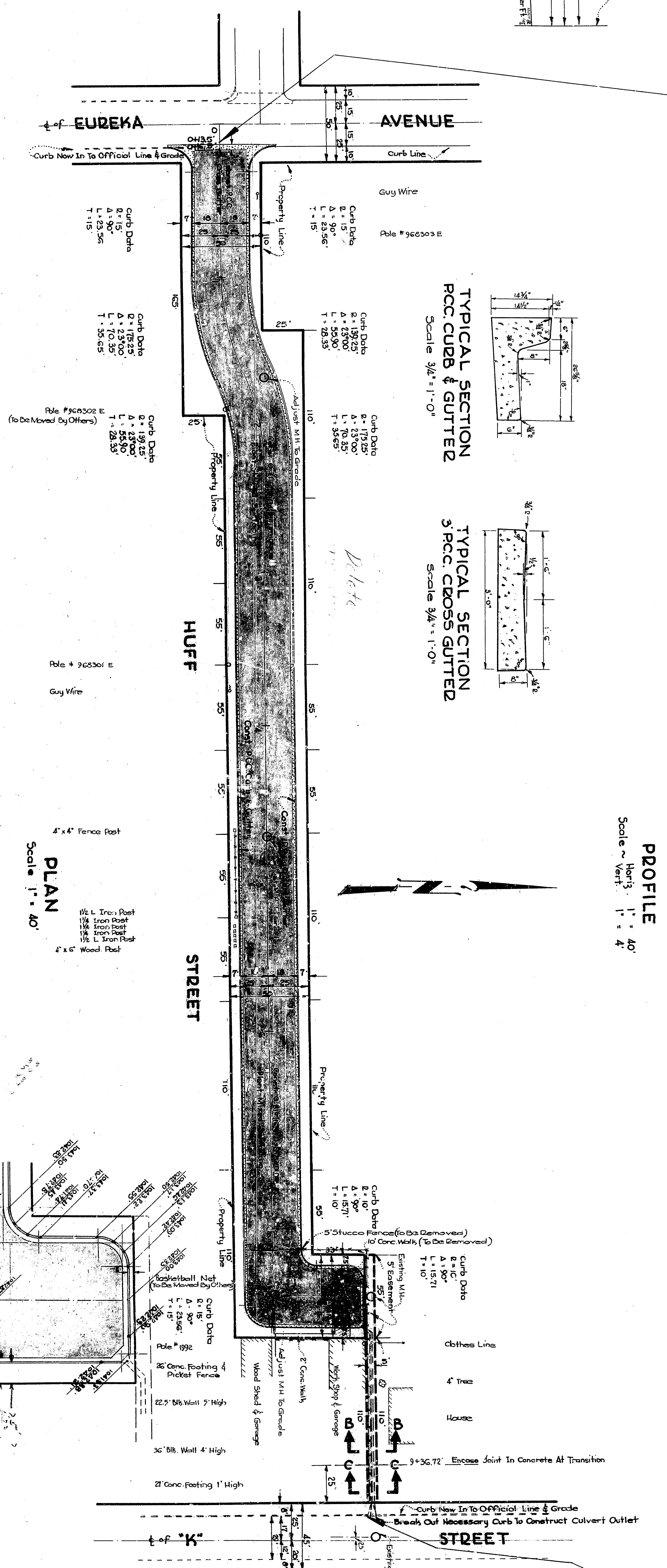
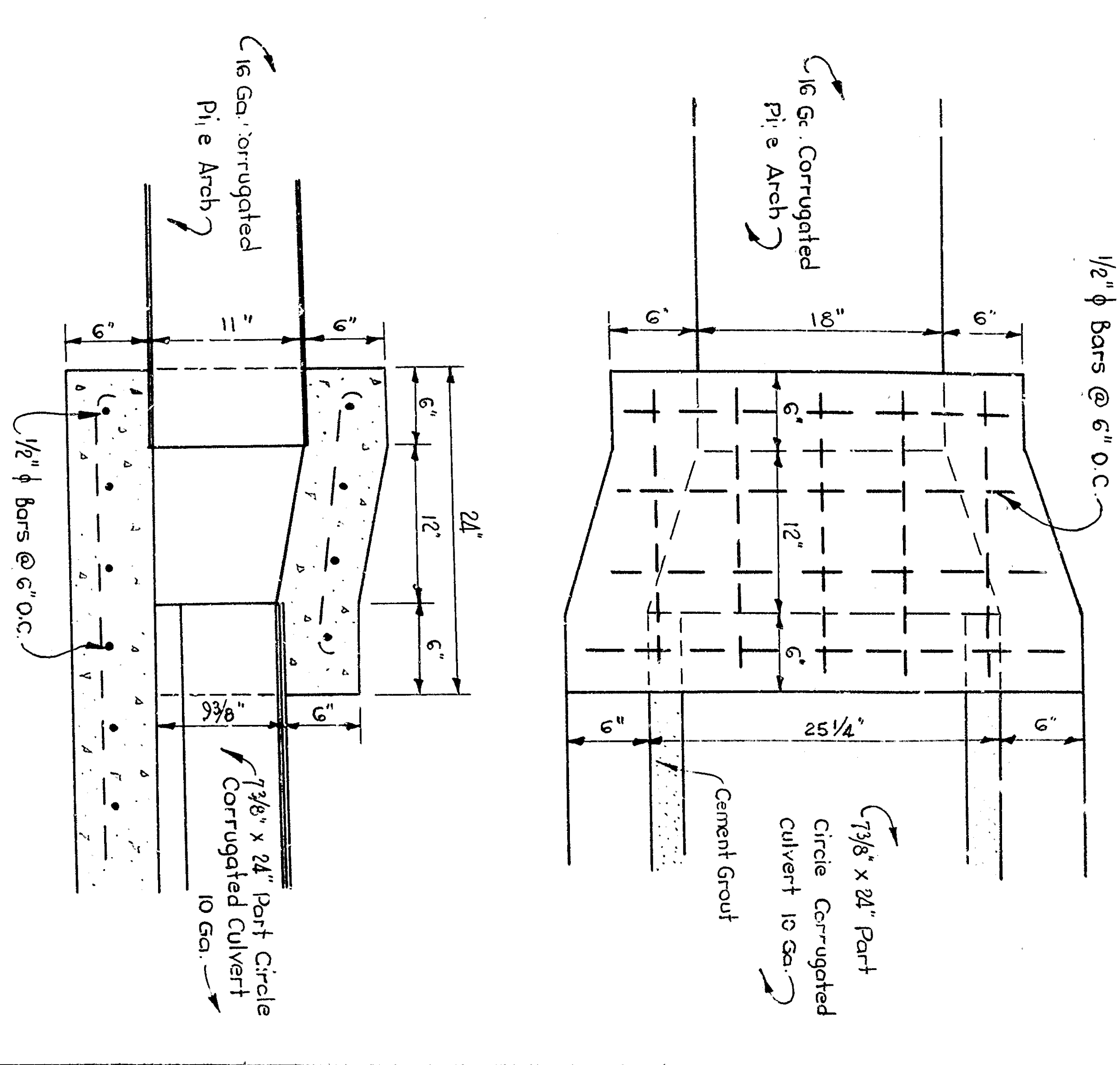
INTERSECTION LEVELS
Scale 1" = 20'



STA. 1+00 - STA 7+41.73
TYPICAL CROSS SECTION
Scale 1" = 5'

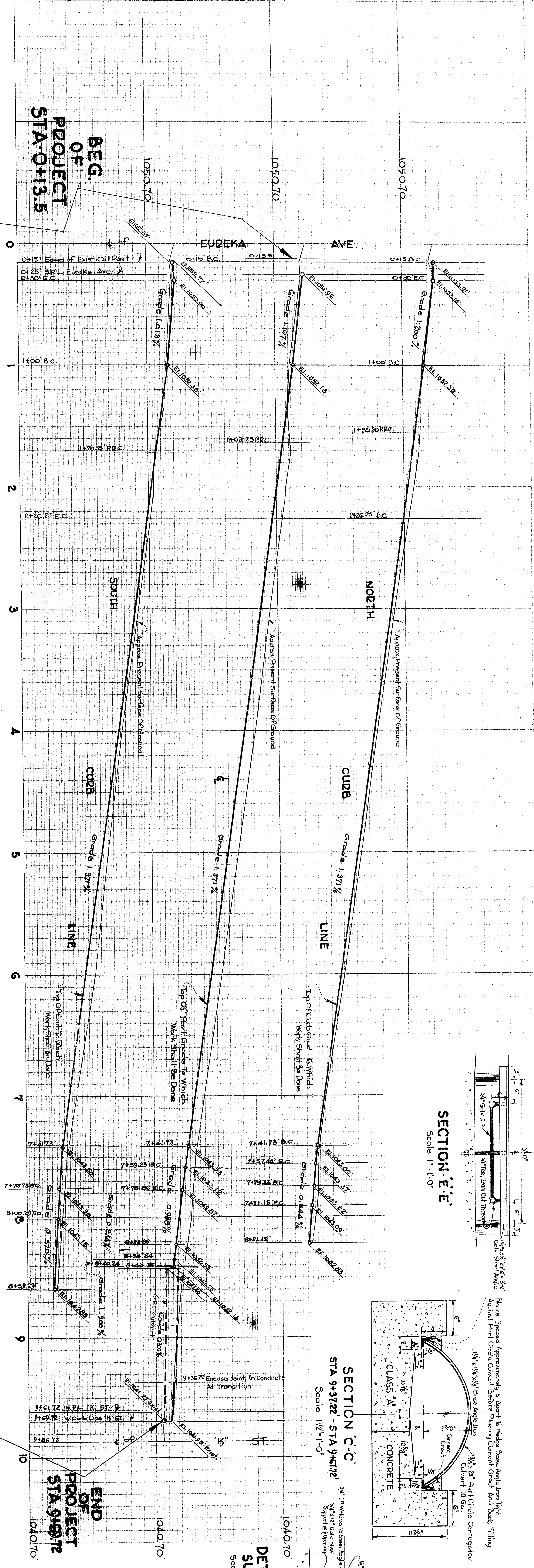


JUNCTION BOX - STA 9+36.72
SECTION
Scale 1" = 1'-0"

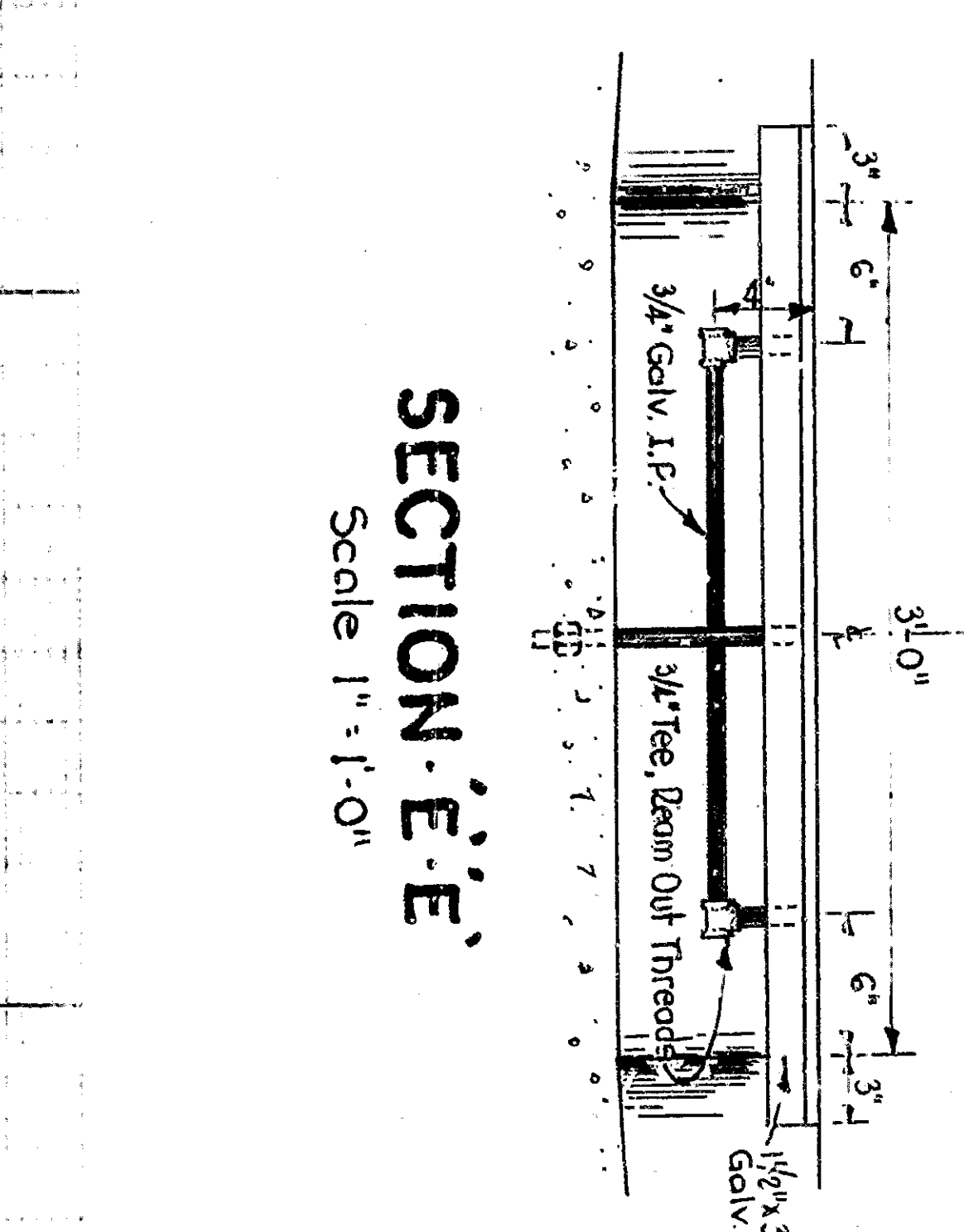


PLAN
Scale 1" = 40'

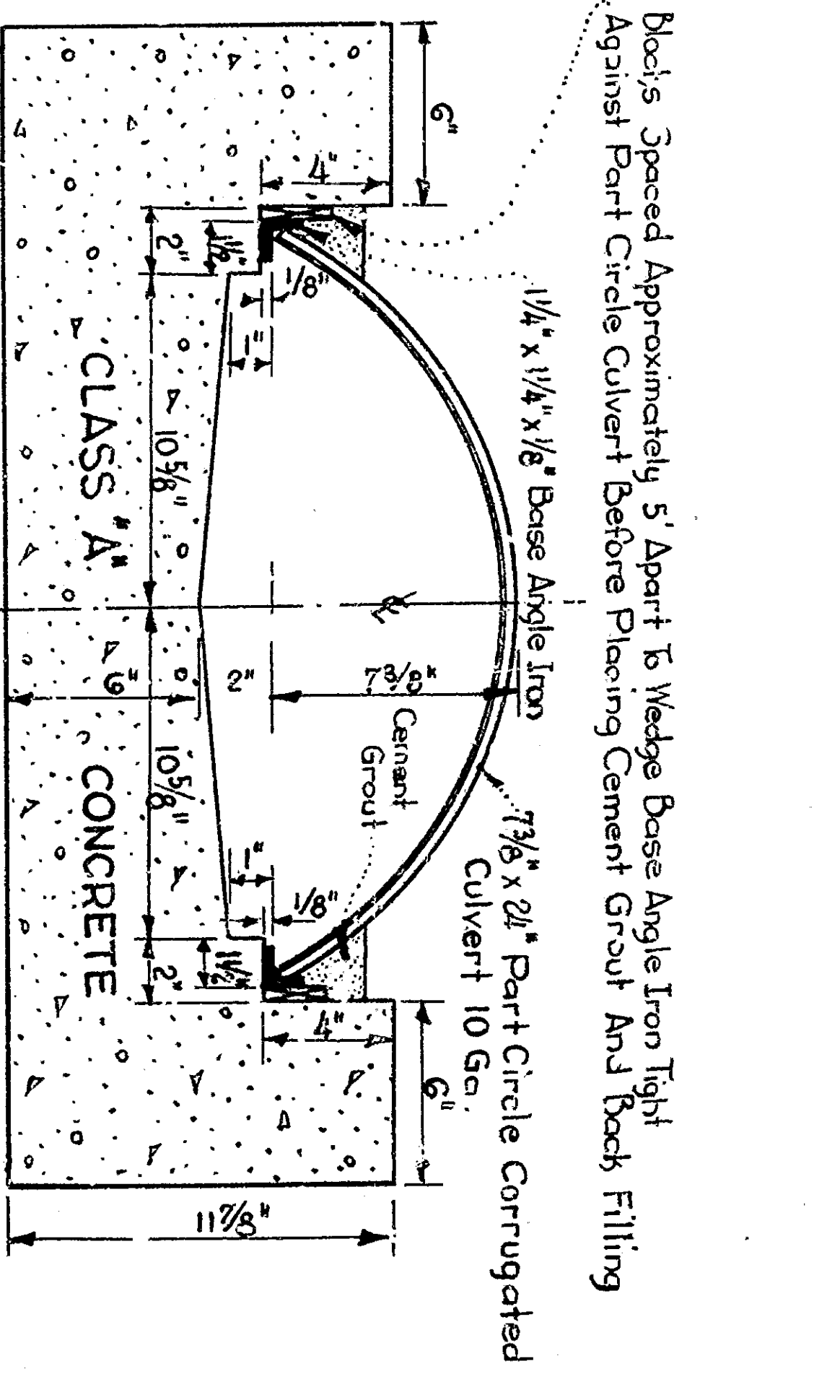
PROFILE
Scale 1" = 40'



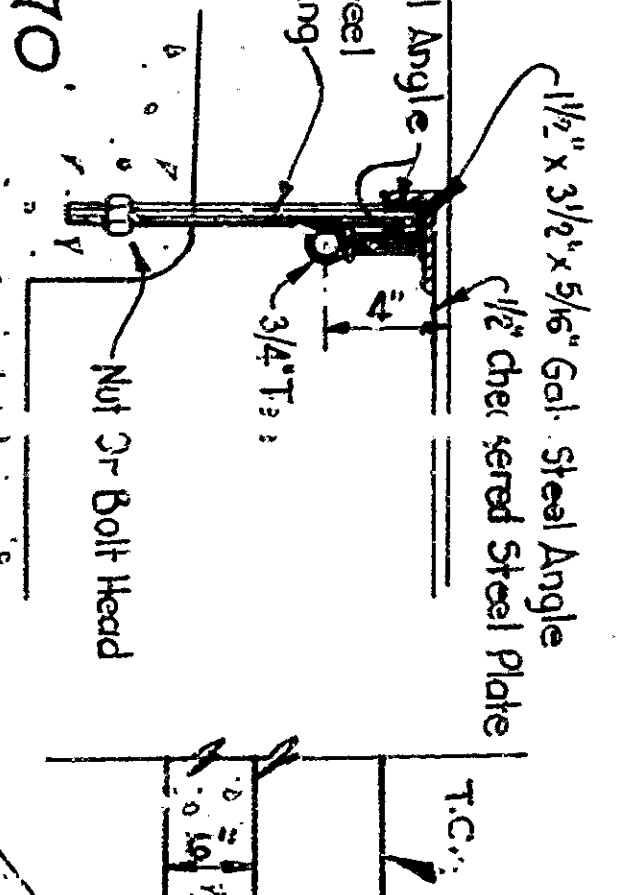
SECTION E-E
Scale 1" = 1'-0"



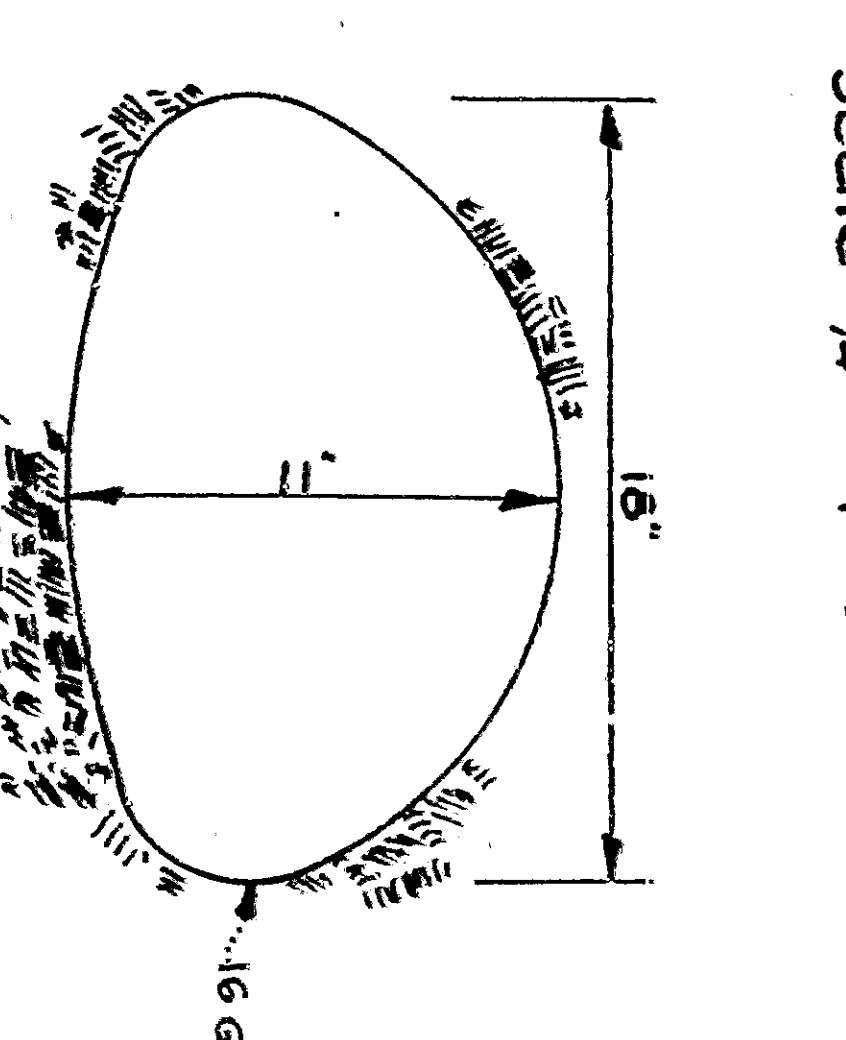
SECTION C-C
STA 9+37.22 - STA 9+41.72
Scale 1 1/2" = 1'-0"



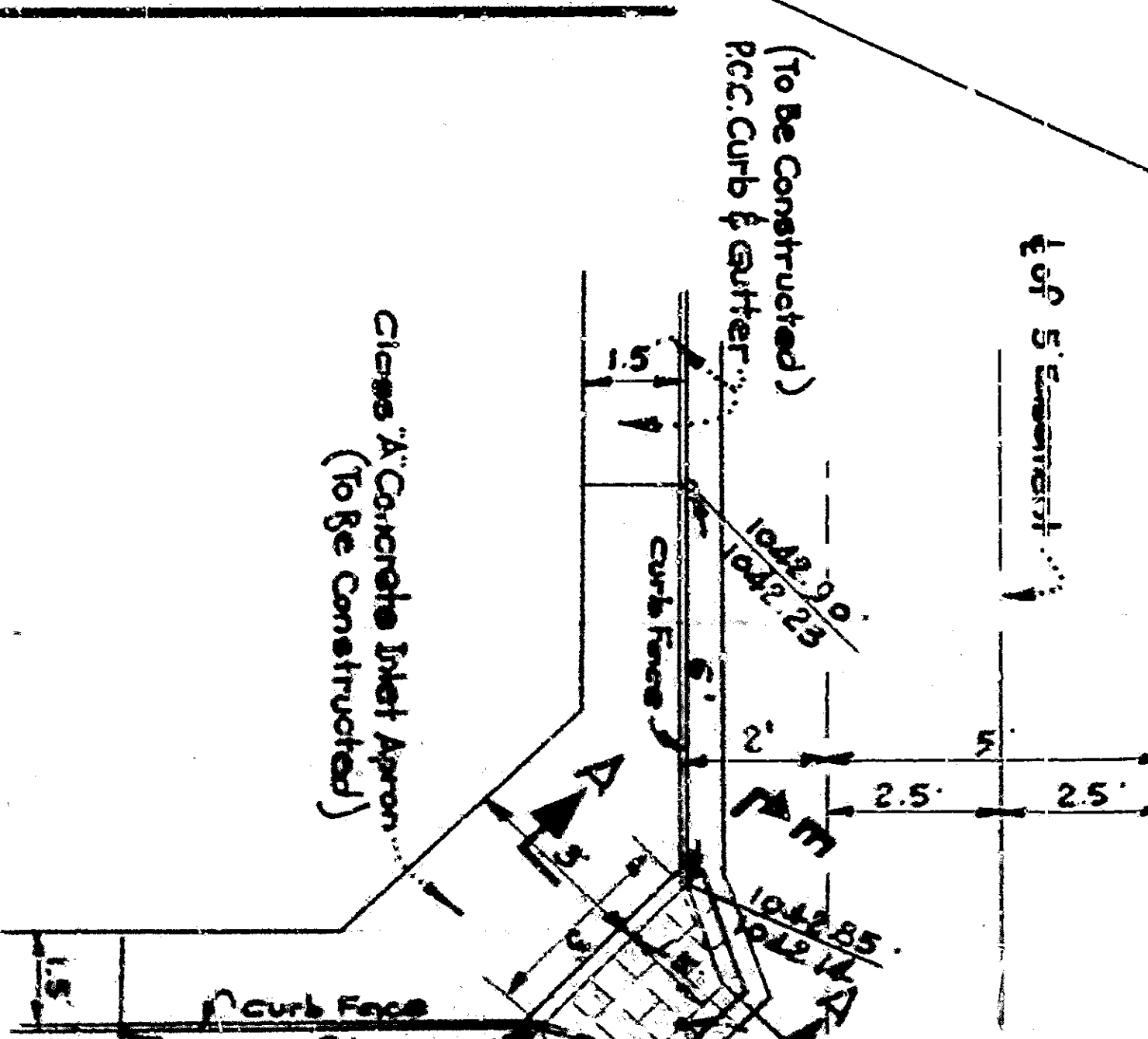
DETAIL OF SUPPORT
Scale 1" = 1'-0"



SECTION B-B
STA 8+42.36 - STA 9+36.22
Scale 1 1/2" = 1'-0"



CULVERT INLET DETAIL
Scale 1/2" = 1'-0"



PLAN
DEPARTMENT OF PUBLIC WORKS
CITY OF EUREKA
CURBS

NOTE: All work shall conform to the provisions of the City of Eureka Ordinance No. 1000, and all other applicable provisions.
All materials to be used shall be of the best quality obtainable.
Particulars to be shown on drawings shall be as shown on drawings.

DESIGNED BY: *[Signature]*
CHECKED BY: *[Signature]*
APPROVED BY: *[Signature]*
DATE: 10/1/22